

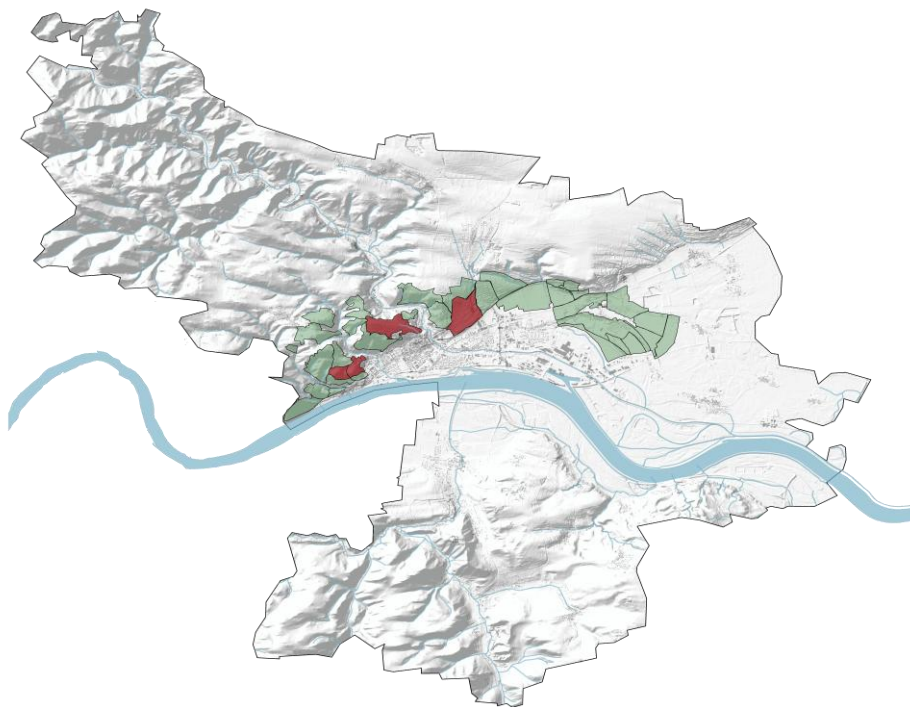
# General information about our vines

## Exceptional soils for exceptional wines.

We enjoy narrating about the Kremstal, but not only because our winery is based in Krems. It is much more because Krems, in fact, is a place with extraordinary geological and climatic surroundings.

From a geological point of view, the Kremstal is an encounter of the Bohemian Mass, coming from the north-west, and the gigantic loess formations in the east of Krems. The southern border line is drawn by the Danube. Weathered primary rocks such as gneiss, schist and amphibolite are the main compounds of one of the oldest soil types on the planet, the Bohemian Mass. Whereas 300.000 years ago, the sandy loess drifted from the alps into our region.

The climatic influences are diverse too. From the north-west, Atlantic-Polar climate keeps with cool air streams the freshness of the grapes in the late summer to fall. Coming the opposite way, the Pannonian climate contributes with hot air to ripen the grapes. These influence are regulated and smoothed by the Danube.



## Weingut **Stadt Krems**

WEINGUT DER STADT KREMS | Stadtgraben 11 | 3500 Krems an der Donau  
+43 2732 801 441 | office@weingustadtkrems.at | www.weingutstadtkrems.at